

Map

Osaka Museum Trip



Osaka Museum Trip

Nakanoshima



Nakanoshima Museum of Art, Osaka 4-3-1 Nakanoshima, Kita-ku, Osaka 530-0005
 Osaka Science Museum 4-2-1 Nakanoshima, Kita-ku, Osaka 530-0005
 The Museum of Oriental Ceramics, Osaka 1-1-26 Nakanoshima, Kita-ku, Osaka 530-0005

Tennoji



Osaka City Museum of Fine Arts
 1-82 Chausuyama-cho, Tennoji-ku, Osaka 543-0063 (in Tennoji Park)

Osaka Castle



Osaka Museum of History
 1-32 Otemae 4-chome, Chuo-ku, Osaka 540-0008

Nagai



Osaka Museum of Natural History
 1-23 Nagai Park, Higashi-sumiyoshi-ku, Osaka 546-0034

Administrative Agency for Osaka City Museums

For inquiries, please contact Address: Osaka Museum of History, 4-1-32 Otemae, Chuo-ku, Osaka 540-0008
 Phone: 06-6940-4330 Fax: 06-6940-0551

Scan for more info about Osaka Expo



Scan for more info about Japan Cultural Expo 2.0



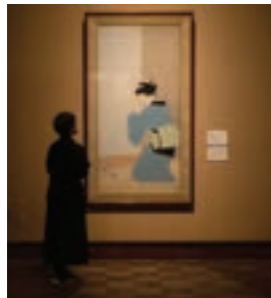
The Treasures of Osaka are revealed for all to see



Six major museums in Osaka will hold a joint *OSAKA-HAKU* to coincide with the official 2025 Osaka/Kansai World Expo. The six are, the: Osaka City Museum of Fine Arts, Osaka Museum of Natural History, Museum of Oriental Ceramics, Osaka, Osaka Science Museum, Osaka Museum of History, and Nakanoshima Museum of Art, Osaka. Both ancient and modern, collected and handed down over generations, the *Treasures of Osaka* reflect the city's prosperity. One hundred twenty will be selected as representative works and presented on special display for the *OSAKA-HAKU*, allowing visitors to experience the charms of Osaka through the history of the collectors and how they passed down these *Treasures of Osaka*. A variety of content will be presented to ignite intellectual curiosity, including a *Treasures of Osaka* online exhibition, museum tours, and the offering of tourist information. This *OSAKA-HAKU* is being organized by the museums for both residents and visitors to the city to celebrate these treasures. This booklet introduces the highlights of the six museums. We hope you can feel and enjoy the power infused in Osaka as a city of culture through your own direct encounter with its preserved treasures.

Osaka City Museum of Fine Arts

Located in Osaka's Tennoji district, the Osaka City Museum of Fine Arts is a captivating place. Its extensive art collection is housed in a historic building with stunning marble decor. The museum's doors opened in 1936 after surviving the Great Depression and several natural disasters. On display are precious artifacts from distant lands along with treasures from Asia, with a focus on ancient Asian art. Works from the approximately 8,500-item permanent collection and items on loan from Buddhist temples and Shinto shrines are regularly shown at special exhibits, supporting the advancement of Japanese art. A relaxing park lawn and restaurants nearby allow visitors to enjoy a full day of art and culture.



Phone: 06-6771-4874
Hours: 9:30AM-5:00PM
(last entry 30 minutes before closing)
Days closed: Mondays (or the following weekday if Monday is a national holiday), New Year holiday
Closed: September 26, 2022 - Spring 2025

Osaka Museum of Natural History

The Osaka Museum of Natural History, located in Nagai Park, displays a collection of roughly 10,000 items. Its whale skeletons on display—finback, humpback, and sperm whale—and lifelike reconstruction of a Naumann's Elephant have an enormous, grand presence. Explore how people have lived with nature across history. There is also an exhibit that focuses on the problem of invasive species. The museum holds popular educational events such as nature walks to promote the importance of nature conservation and solidify its ties to the local community. The Osaka Museum of Natural History is an oasis of nature in an urban environment. Come and enjoy a unique journey of exploration that can only be experienced here.



Phone: 06-6697-6221
Hours: 9:30AM-5:00PM
(Closes at 4:30PM from Nov. to Feb.)
(last entry 30 minutes before closing)
Days closed: Mondays (or the following weekday if Monday is a national holiday), New Year holiday

The Museum of Oriental Ceramics, Osaka

The Museum of Oriental Ceramics, Osaka, is a treasure house of ceramics with exquisite pieces from China, Korea, and Japan on display. The entire Ataka Collection and other priceless masterpieces were donated by the Sumitomo Group to the city of Osaka. The museum's collection includes national treasures and important cultural properties. With the addition of the Rhee Byung-Chang Collection of Korean ceramics, plus other donated works from around Japan, the collection today has 5,732 items. The works on permanent exhibition are



organized by era and technique; many special exhibitions are also held, and there is a section devoted to the work of contemporary artists. The Chinese ceramics, with their vibrant coloring, are displayed under bright lighting while the Korean and Japanese pieces are displayed in a more tranquil setting. The museum offers a unique space weaving together art and history that will inspire and reward every visitor!



Phone: 06-6223-0055
Hours: 9:30AM-5:00PM
(last entry 30 minutes before closing)
Days closed: Mondays (or the following weekday if Monday is a national holiday), exhibition changeovers, New Year holiday
Closed: February 7, 2022 - Spring 2024

Osaka Science Museum

The Osaka Science Museum is a rewarding learning center for science in Osaka that will inspire the intellectual curiosity of future scientists. It is a place for the hands-on discovery of scientific phenomena that children and adults alike will enjoy. The exhibition areas are like laboratories filled with excitement. The fourth floor is for discovering the secrets of the universe with a planetarium renovated in 2022. The



planetarium has specially reclining seats from which to gaze up at the galaxy while listening to staff commentary. Visitors can also view a model of Japan's first robot, named Gakutensoku, along with materials involved in the research performed by Japan's first Nobel laureate, physicist Dr. Hideki Yukawa. A café and museum shop will round out your visit. You will surely enjoy this one-of-a-kind science museum.



Phone: 06-6444-5656
Hours: 9:30AM-5:00PM
(Tickets and admission to the exhibition hall are available until 4:30PM; the last planetarium show starts at 4:00PM)
Days closed: Mondays (or the following weekday if Monday is a national holiday), New Year holiday, and other occasional closings
Closed: November 6, 2023 - Summer 2024

Osaka Museum of History

The Osaka Museum of History is located in a tall building across from Osaka Castle Park, with its lush greenery, and Naniwa Palace Site Park. The museum presents the rich history and culture of the city of Osaka from ancient to medieval and early-modern times, as well as modern times to the present day, employing a wealth of real objects, full-scale reproductions, miniature models, and video. Be awed standing in an actual-size reconstruction of the main hall of Naniwa Palace, Daigokuden Hall from the seventh-century Nara Period. Then walk through the



realistically reproduced streets of Shinsaibashi-suji and Dotonbori in the early 20th century at the end of the Taisho Period and beginning of the Showa Period to experience a time slip into the Osaka of yore. Gaze out of the top floor windows—a great photo spot with a panoramic view below of Osaka Castle and Naniwa Palace Site Park. We invite you to discover the charms of Osaka through its history and culture presented here.



Phone: 06-6946-5728
Hours: 9:30AM-5:00PM
(last entry 30 minutes before closing)
Days closed: Tuesdays (or the following day if Tuesday is a national holiday), New Year holiday

Nakanoshima Museum of Art, Osaka

Nakanoshima Museum of Art, Osaka, has an excellent collection of over 6,000 works of art and design from Japan and abroad that span the late 19th century to the present day, with an additional focus on the vibrant creation of art taking place in Osaka. The interior architecture features a three-dimensional space, an atrium that serves as a "passage"—a public space freely accessible to passersby day and night. Based on the architect's concept of an "art museum like a metropolis where a variety of people and activities intersect," it aims to be a place where everyone can visit casually, feel relaxed, and be inspired.



Phone: 06-6479-0550
Hours: 10:00AM-5:00PM
(last entry 30 minutes before closing)
Days closed: Mondays (or the following weekday if Monday is a national holiday)
During exhibition changeovers and New Year holidays